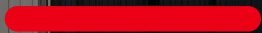




DB Fahrzeuginstandhaltung GmbH

Meiningen maintenance depot



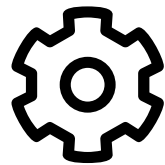
Overview of DB Fahrzeuginstandhaltung

Who we are



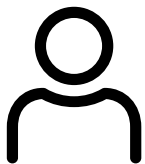
5,268

**trains, locomotives
& vehicles**



1,295,957

components



8,195

employees



1,596 Mio. Euro

revenue



Meiningen maintenance depot

As your expert in maintenance, we offer a wide range of services for your entire rail vehicle fleet.

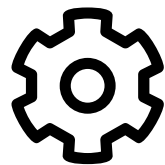
Meiningen maintenance depot

Who we are



227

trains, locomotives
& vehicles



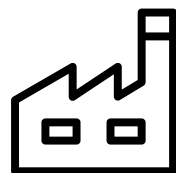
738

components



133

employees



57,918 m²

Total area



Meinigen maintenance depot

Milestones



1914

Opening of the Meinigen steam locomotive maintenance depot

1960

Construction of the locomotive 18 201 (fastest operational steam locomotive)

2008

New construction of 2 locomotives

2020

Product launch of wheel sets for DB Netz AG work and measurement vehicles

2022

Expansion of the inspection portfolio to include cranes from the manufacturer Kirow

2024

First overhaul of track maintenance vehicles 741 series (GAF 100)



Our service portfolio

We leverage the modern technical infrastructure of our network of maintenance depots and the expertise of our employees to offer the right solutions for all maintenance matters.

Meinigen maintenance depot

Maintenance of historic rail vehicles



Experts for historic rail vehicles

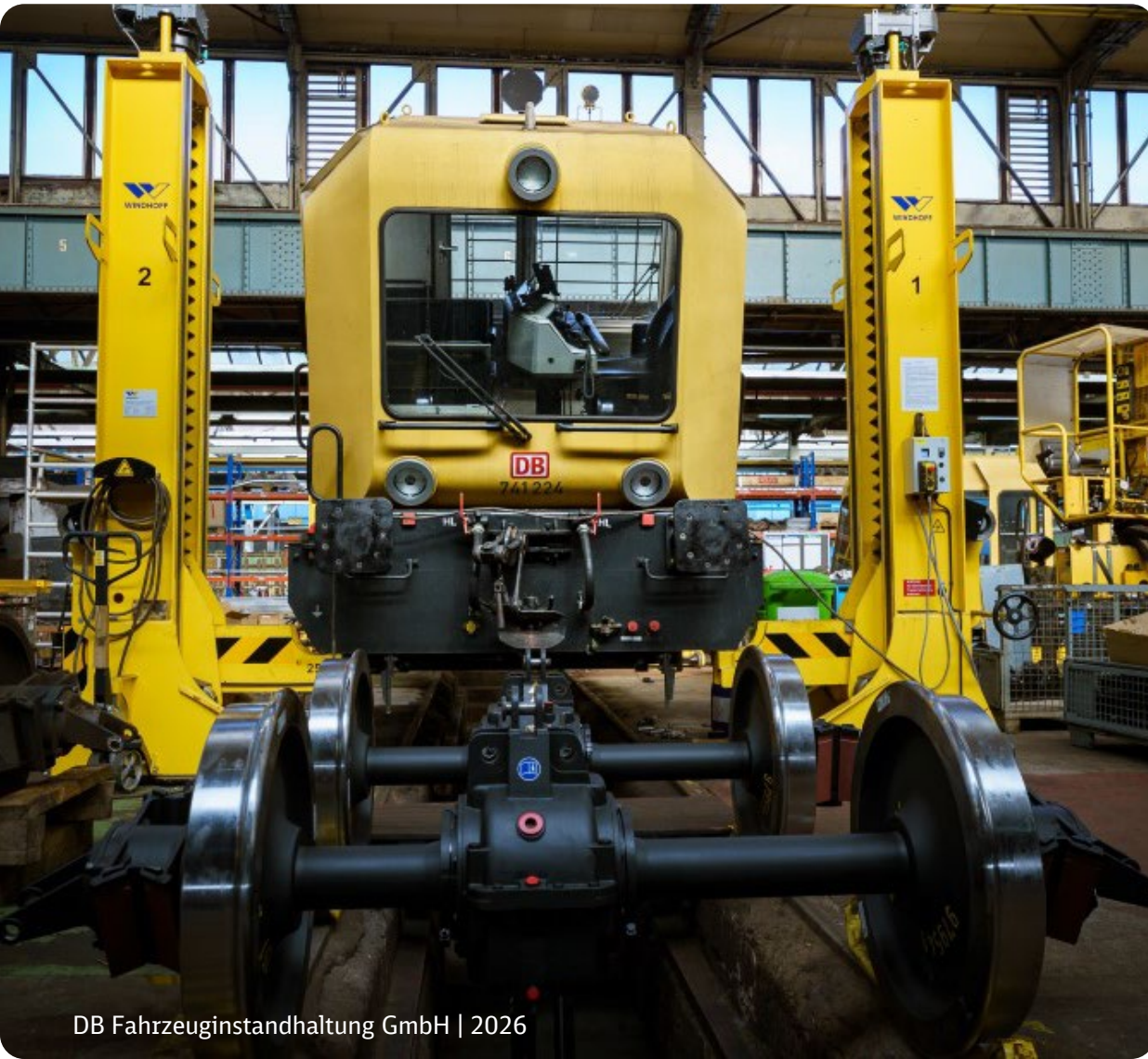
Our Meinigen steam locomotive maintenance depot is the address for the maintenance of historic rail vehicles. Regular and narrow-gauge locomotives and carriages are repaired here for DB AG, privately owned railways, museum railways and railway associations in Germany and abroad.

In addition to complete vehicles, we also refurbish individual components such as wheelsets of all gauges, fittings, pumps and boilers.



Meinigen maintenance depot

Consolidated specialist knowledge



Experts for auxiliary vehicles

Our maintenance depot has long specialised in working on DB InfraGo's emergency technology. This includes maintenance and overhaul work on snow clearing vehicles and emergency crane trains.

Of increasing importance for the maintenance depot are the overhauls of construction cranes and the overhauls of the BR 741.x track maintenance vehicles.

We also provide support services for various track construction facilities.

DB Fahrzeuginstandhaltung GmbH
Am Flutgraben 2
98617 Meiningen
GERMANY

www.db-fzi.com

Copyrights



- **Slide 1:** DB Fahrzeuginstandhaltung GmbH / Max Lautenschläger
- **Slide 3:** DB Fahrzeuginstandhaltung GmbH / Max Lautenschläger
- **Slide 5:** DB Fahrzeuginstandhaltung GmbH / Udo Steinwasser
- **Slide 6:** DB Fahrzeuginstandhaltung GmbH / Max Lautenschläger
- **Slide 7:** DB Fahrzeuginstandhaltung GmbH / Max Lautenschläger
- **Slide 8:** DB Fahrzeuginstandhaltung GmbH / Max Lautenschläger