



Full Service

Our attractive Full Service offering for diesel locomotives allow you to take advantage of a full range of maintenance services for your diesel locomotives, all of which are available from a single source. In addition to heavy maintenance work and mobile services, we will maintain your rail vehicles and equipment while they are in active service via our partner depots throughout Europe.

Overview of our Full Service offering:

- **Heavy Maintenance including refurbishment of components**
- **Organisation of maintenance services during active operation**
Stationary preventive and corrective works
- **Mobile service**
Mobile preventive and corrective works
- **Additional services and service offerings**
Support services relating to maintenance and railway operations



Our Service for Your Diesel Locomotives

DB Fahrzeuginstandhaltung

Comprehensive. Diverse. Superior.

Contact

DB Fahrzeuginstandhaltung GmbH
Weilburger Straße 22
60326 Frankfurt am Main, Germany

sales-fzi@deutschebahn.com
www.db-fzi.com

© Photos: DB AG

Last updated: January 2017



As one of the most skilled Full Service providers for rolling stock in Europe, we have the capacity, the necessary experience and the advanced technology required to provide you with the optimum maintenance of your rolling stock.

Whether you require a general inspection, repair work after an accident or component refurbishing, we are very familiar with many different types of work and can offer you all maintenance services across the entire operative lifecycle of diesel locomotives. To this end, we are specialised in a large number of new and older-generation model series such as the G1206, Class 66/77, Gravita, diesel TRAXX, ER 20, 218 and many others.

Overview of our services for diesel locomotives:

- General inspections
- Accident repairs
- Customised maintenance/upgrades
- Refurbishment of components
- Mobile maintenance
- Condition-based maintenance
- Maintenance of chassis
- Diagnostics services
- Vehicle servicing
- Special-purpose maintenance work
- Maintenance and modernisation of diesel power units
- NDT (non-destructive testing)



General inspections

Rail vehicles must be professionally checked after the time limits defined for them or a maximum mileage rating has been reached. General inspections and overhauls are part of our core business.

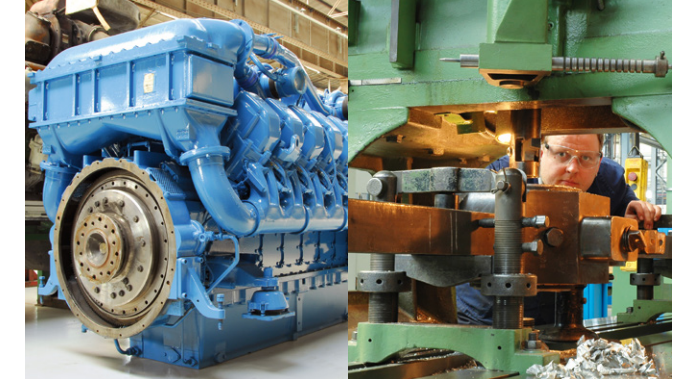
We dispose of extensive competency and many years of experience with overhauling rolling stock. Among others, our services include the general inspection in accordance with:

- Railway Construction and Operations Act Sections 32 and 33
- Country-specific rules and regulations
- Applicable regulations
- Customer specifications
- Manufacturer recommendations
- Recommendations of DB Fahrzeuginstandhaltung

Every year, the maintenance depots in Cottbus and Bremen by DB Fahrzeuginstandhaltung carry out more than 150 general inspections on diesel locomotives from a wide range of customers.

Accident repairs

Has one of your vehicles been damaged or cannot be operated due to an accident that has occurred? Are you now confronted with the question of what to do? You can turn to us: no matter where you are in the world, we guide you through the damage analysis process, then help with repair concepts and repair work right up to the moment in time when your vehicle starts running again.



Customised maintenance/upgrades

Diesel locomotives and their renowned durability are continually required to fulfil new requirements throughout the course of their operative service life. We will assist you as a competent and reliable business partner when it comes to carrying out customised maintenance and upgrades.

In addition to upgrades of existing equipment to the latest technical standards and remotorisations of locomotives, we can install components designed to save energy. One example of this would be to install an on-board power unit based on a three-rotor Wankel engine to also provide diesel locomotives with electric power when the main engine is switched off. This measure can likewise be used to heat or cool the driver's cab and to warm up the diesel fuel.

Refurbishment of components

Diesel locomotives comprise a multitude of components that require varying levels of servicing and maintenance. The overarching objective we pursue is to ensure an optimal service life for components so that your diesel locomotives remain in service for as long as possible, and we do just that by upholding high-quality maintenance standards.

Our many years of experience in maintaining the components of common assemblies found in all vehicle classes and categories has allowed us to amass a comprehensive set of skills and know-how.

To this end, we offer maintenance services for all types of rail vehicle components fitted to a wide range of diesel locomotives – from combustion drives through to chassis.